



# Massachusetts Calendar Year 2014 HAI Data Summary

## Statewide Hospital Summary

Release Date: July 2015

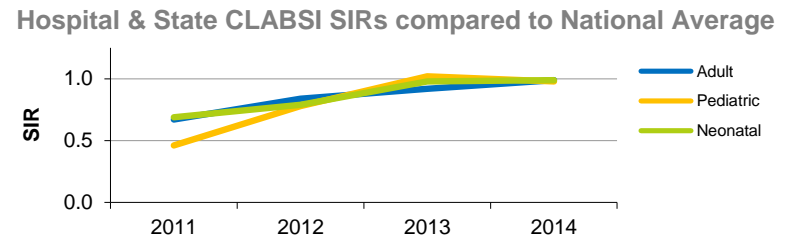
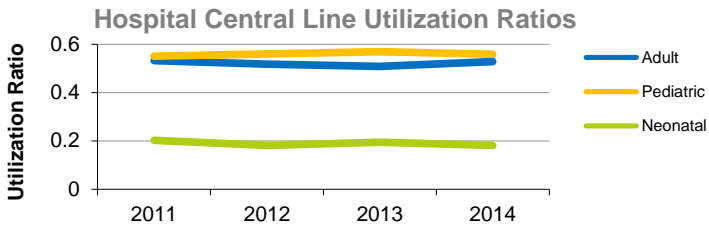
### 2014 Hospital Survey Statistics

	Small Hospital <100 Beds	Medium Hospital 100-299 beds	Large Hospital 300+ beds
Number of Hospitals	21	35	13
Medical School Affiliation	14%	46%	77%
Average Number of Beds	63	182	539
Average Number of ICU Beds	6	22	87
Average Number of Admissions	3,706	10,207	30,596
Average Number of Patient Days	13,901	43,386	151,745
Beds per Infection Preventionist	62.8	126.6	140.0

### Central Line-Associated Blood Stream Infection

CLABSI Rates by ICU Type for 2014, Compared to State Data from 2012-2013

ICU Type	Number of ICUs	Infections	Line Days	Rate	Predicted Infections	SIR	Confidence Interval	Interpretation
Burn	2	13	1,827	7.12	4.57	2.85	(1.58 - 4.74)	Higher
Cardiac	9	14	15,392	0.91	13.85	1.01	(0.57 - 1.56)	Same
Cardiothoracic	11	17	24,396	0.70	17.08	1.00	(0.59 - 1.56)	Same
Medical	19	38	36,296	1.05	35.38	1.07	(0.77 - 1.45)	Same
Medical/Surgical	55	35	56,104	0.62	44.02	0.80	(0.56 - 1.09)	Same
Neurosurgical	2	1	4,457	0.22	3.57	0.28	(0.01 - 1.38)	Same
Pediatric	8	18	17,173	1.05	18.32	0.98	(0.60 - 1.52)	Same
Surgical	15	36	33,491	1.07	32.60	1.10	(0.78 - 1.51)	Same
Trauma	3	0	4,378	0.00	5.25	0.00	(0.00 - 0.57)	Lower
Neonatal	10	18	17,007	1.06	18.26	0.99	(0.60 - 1.52)	Same



### Surgical Site Infection

Hospital SSI SIRs by Procedure Type for 2014 Calendar Year

Procedure	Hospitals Reporting	Infections	Procedures	Predicted Infections	SIR	Confidence Interval	Interpretation
Coronary Artery Bypass (CABG)	14	28	4,061	51.00	0.55	(0.37 - 0.78)	Lower
Knee Prosthesis (KPRO)	63	49	15,543	85.99	0.57	(0.42 - 0.74)	Lower
Hip Prosthesis (HPRO)	62	56	12,051	90.64	0.62	(0.47 - 0.79)	Lower
Abdominal Hysterectomy (HYST)	59	51	5,123	39.38	1.30	(0.97 - 1.68)	Same
Vaginal Hysterectomy (VHYS)	55	26	1,794	8.92	2.92	(1.94 - 4.21)	Higher

Statistically Significant Variation from Predicted Number of Surgical Site Infections, 2011-2014

